



Behaviour
HUBS

Introduction to Behaviour Hubs



Department
for Education



Education
Development
Trust



CONTEXT

A student's experience in school remains one of the most insightful indicators of later life success in any one of a number of metrics. For many it is the best chance they will ever have to flourish. How they conduct themselves at school is crucial to that experience. Helping them develop good behaviour is therefore one of the most important tasks a school faces.

Tom Bennett, 2017

The Behaviour Hubs Programme

- Partner Schools are supported for one year
- Available for schools with an Ofsted 'Good', 'Requires Improvement' or 'Inadequate judgment'
- Supports Primary, Secondary, Alternative Provision and Special schools
- The programme is fully-funded by the DfE
- The programme will partner schools with a local Lead School that has an exemplary school behaviour culture.
- Partner schools will be matched with a Lead School nearby and of the same phase (with a maximum travel time of 2 hours where possible).
- The programme will take on a new cohort of schools each term, giving schools the option to join at a time of year which suits their need.

The Behaviour Hubs Programme

There are three streams of the programme to choose from, depending on the needs of the school or MAT:

Core

For schools who want to work independently

Access to training, networking, open days, and resources

Action planning session

Extended

For schools who need one-to-one support

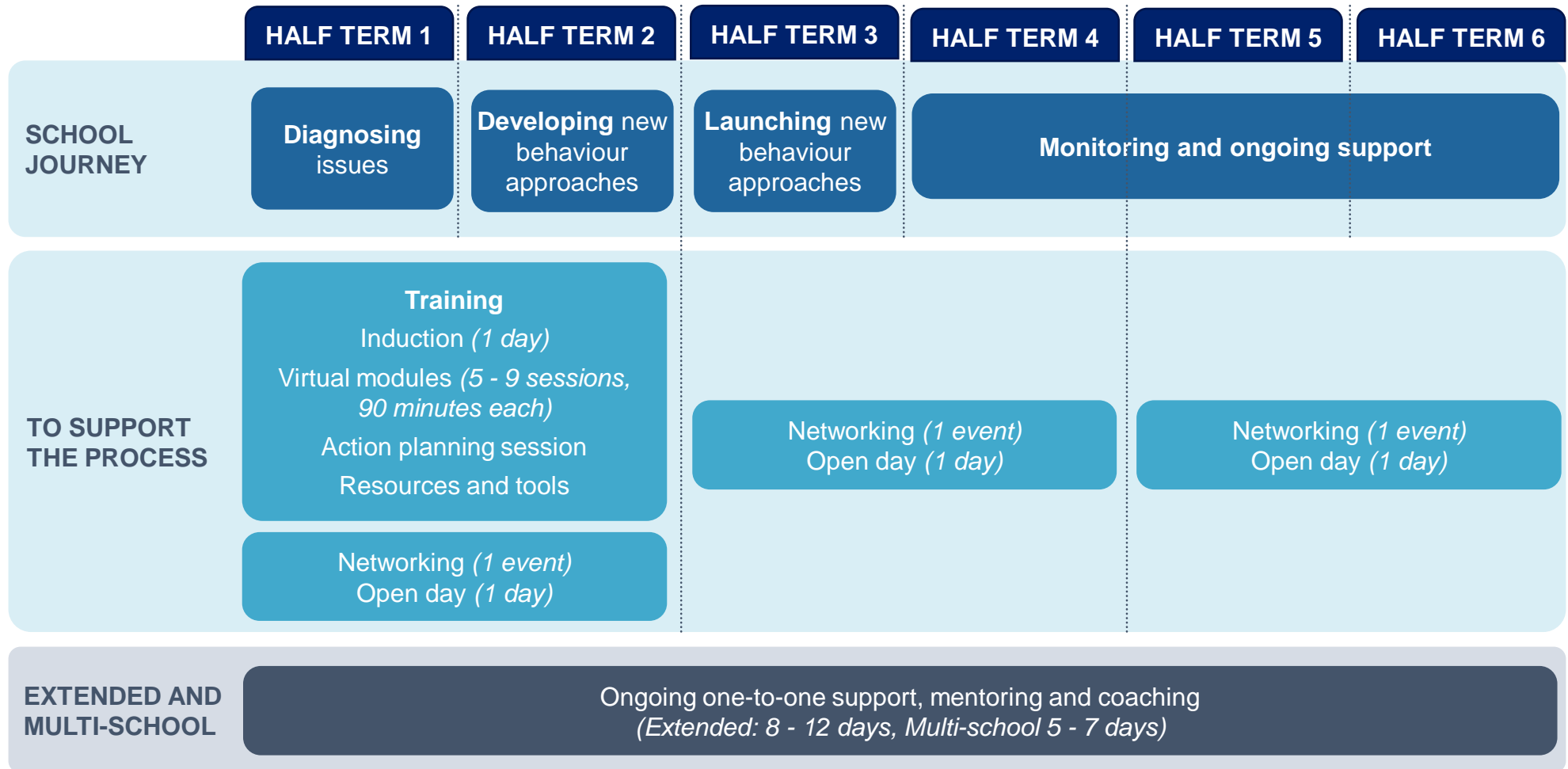
Suitable where changes implemented in the past have not had the desired impact

Multi-school

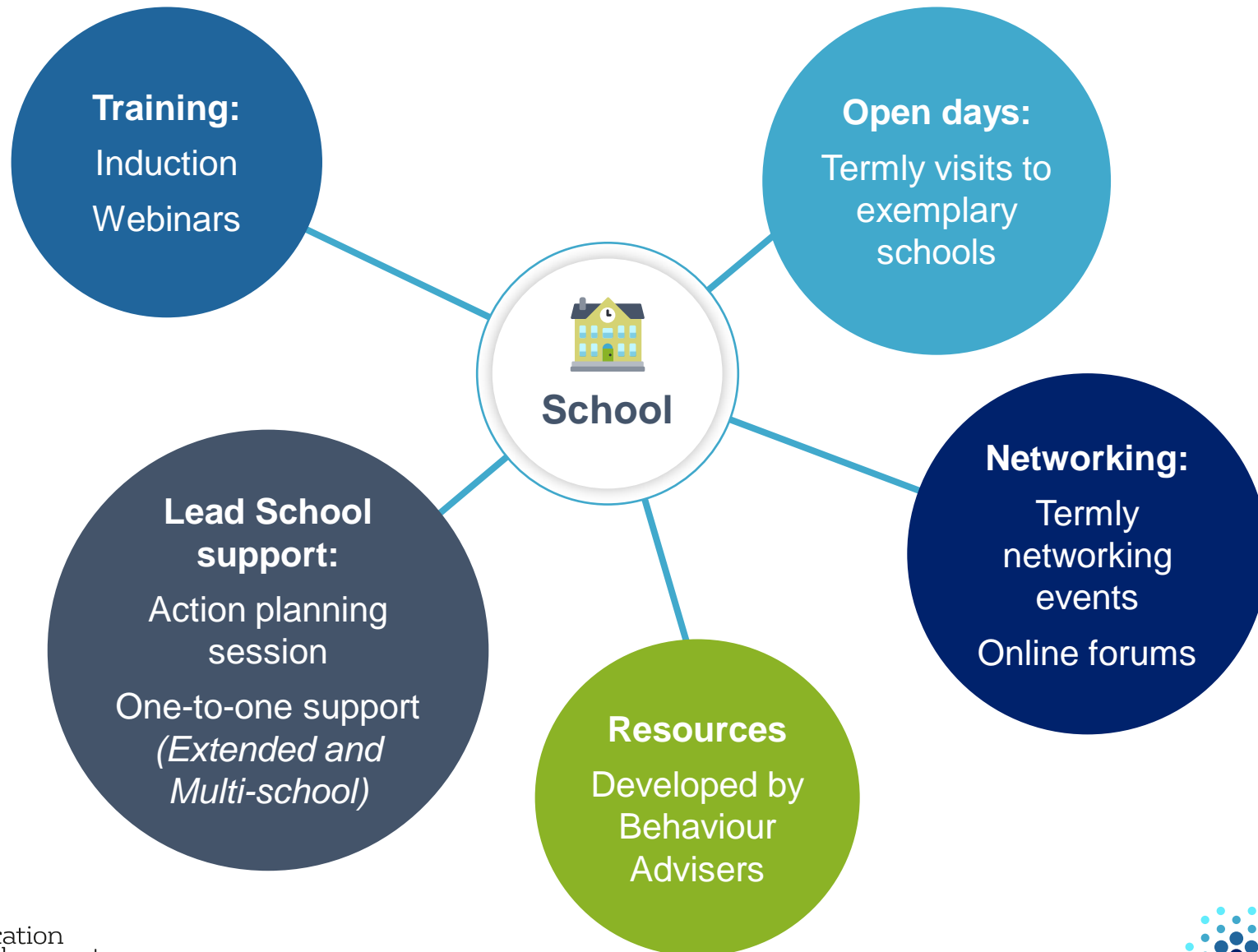
For MATs who would like to implement change across several schools

Includes Extended support for a school within the MAT

Programme structure



Elements of support for Partner schools



How Partner schools can apply

- Complete the short application form
- Application form can be found here:
www.gov.uk/guidance/behaviour-hubs
- New Partner school intakes happen at the beginning of each academic term
- Currently looking to welcome schools onto the January and April 2022 cohorts



For further information

- Contact us:
behaviourhubs@educationdevelopmenttrust.com
- Website and application form:
www.gov.uk/guidance/behaviour-hubs

Please feel free to ask any questions you may have